



Migrating from a DCSPSSxx to a HISP6 Digital Single Point to an Analog Single Point

Overview: Hardy is committed to providing our valued customers with high quality products and outstanding support services. To ensure this commitment, Hardy continuously evaluates its product lines for their manufacturability.

Digital Single Points were removed from the portfolio in 2017. This document provides a guideline to migrate Hardy scale systems using digital sensor technology to currently available analog sensor technology.

1) Instrument Conversion.

- a) Contact Hardy Tech Support to receive an RMA (Return Merchandise Authorization) for the removal of the DWS2 digital weigh scale option card from the instrument and replacement with a AWS2+ high speed analog weigh scale card.

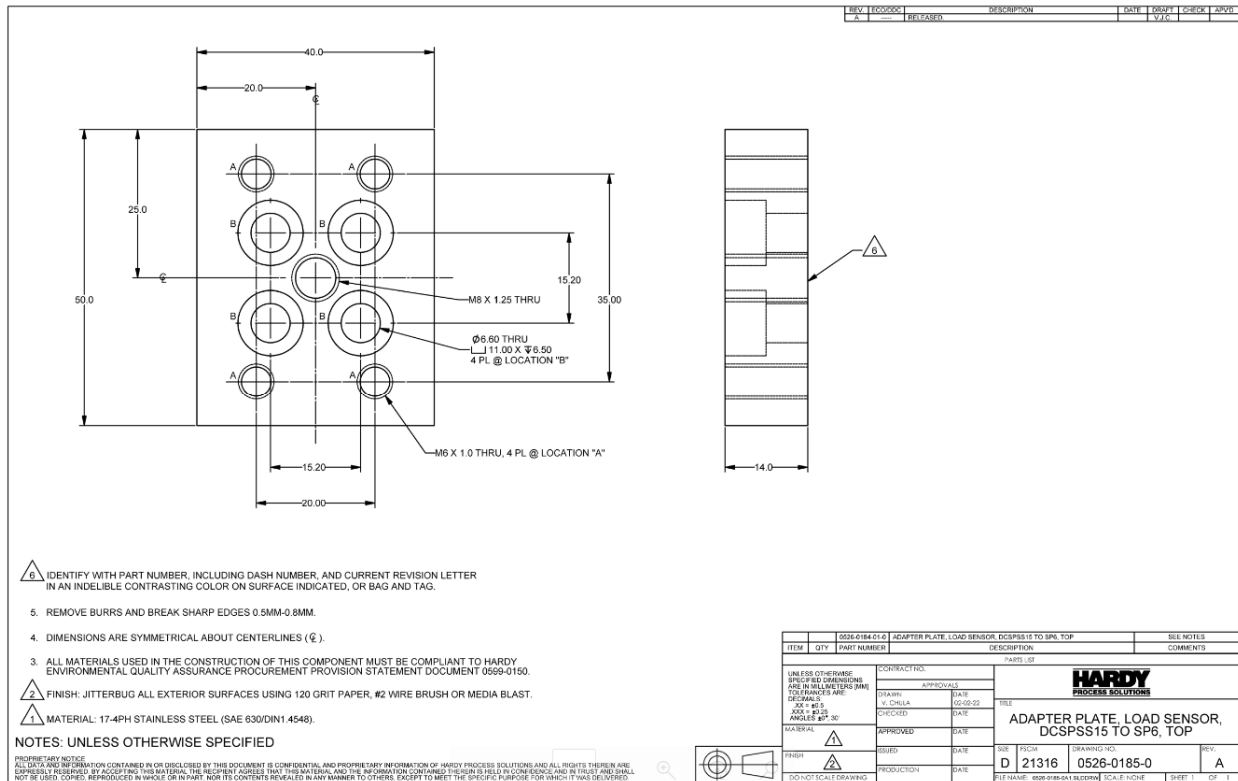
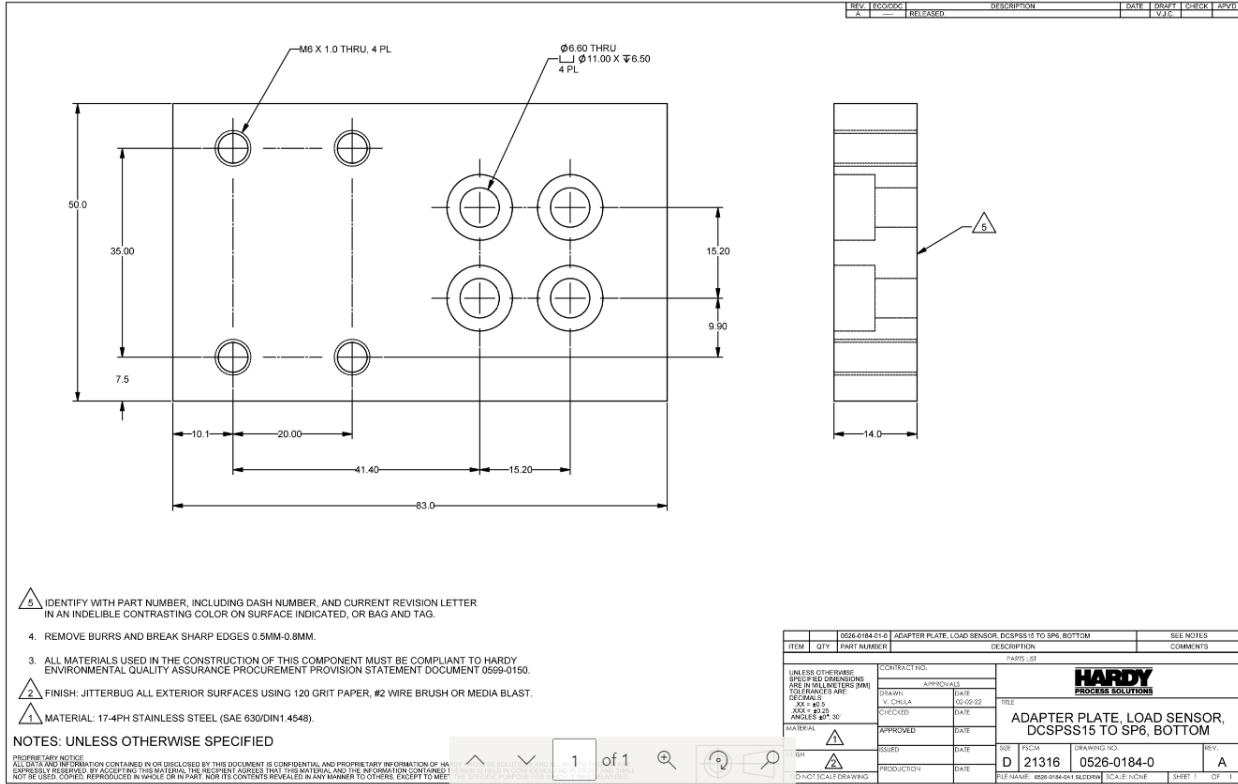
Or

Purchase a new HI4050CW-xx-xx-xx-xx with an AWS2+option card.

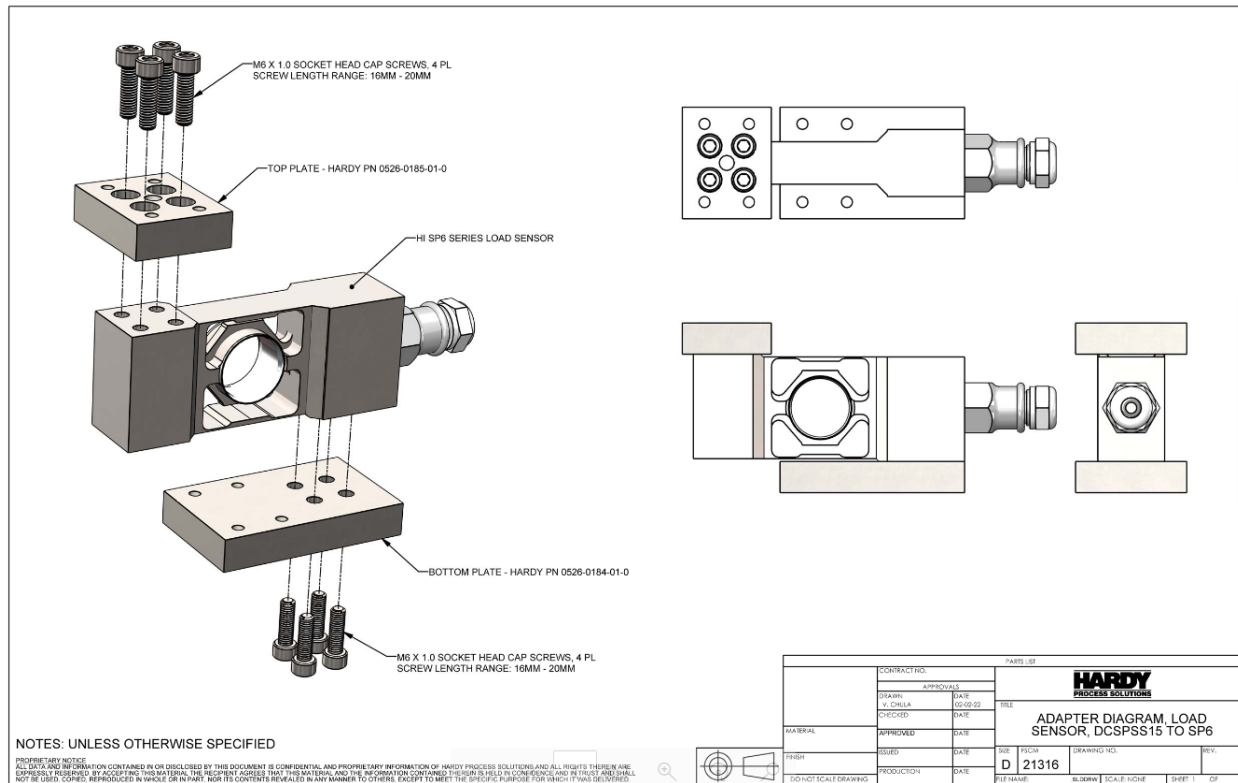
- b) Contact information: 800-821-5831 / Option 4 (6:30 AM to 5:30 PM PST)

2) Sensor Conversion.

- a) Hardy recommends replacement of DCSPSS-xx sensors with the nearest equivalent capacity (rounding up) of HISP6-xx sensors. Increasing capacity will reduce settling time and allow the performance of HISP6-xx sensors to closely match or exceed that of the DCSPSS-xx sensors being replaced.
- b) Machine top and bottom adaptor plates per drawings 0526-0184-0 and 0526-0185-0 shown below. The adaptor plates will allow direct replacement of DCSPSS-xx sensors without the need to modify mounting holes or hole locations. A copy of the drawing can also be found in the Legacy Section of the Hardy website:
<https://www.hardysolutions.com/products/legacy-products/load-cells-and-platform-scales>



- c) Assemble the adaptor plates to the HISP6-xx load cell as shown below, then replace the DCSPSS-xx sensor with the assembly.



3) Contact Hardy Technical Support for questions or additional assistance:

- a) Phone: 800-821-5831 / Option 4 (6:30 AM to 5:30 PM PST)
- b) Email: hardysupport@hardysolutions.com